



**IMPORTANT NOTES  
CONCERNING ELECTRICAL  
MOTOR REPLACEMENTS**



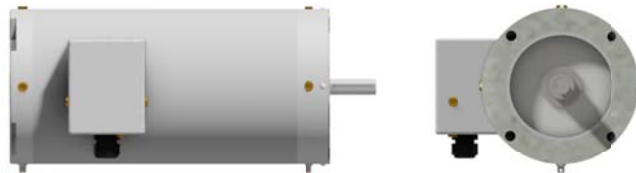
**THERE ARE A TOTAL OF (11)  
DRAIN VENTS:**

- 4 LOCATED ON THE SHAFT END
- 4 LOCATED ON THE BACK END
- 3 LOCATED ON THE ELECT BOX



**8GSKTELC56C0001**

REMOVE BOTTOM PLUGS  
"PLUGS THAT ARE FACING THE  
GROUND" BASED ON MOTOR  
ORIENTATION THE "BOTTOM"  
PLUG(S) WILL CHANGE. SEE  
IMAGES FOR MORE DETAILS.



REMOVE THESE (2) PLUGS AND  
INSTALL VENTS

INSTALL FLANGE GASKET  
**8GSKTELC56C0001**  
BETWEEN MOTOR AND GEARBOX  
C-FLANGE FOR ALL MOTOR  
CONFIGURATIONS.

**TOP WHEEL MOTOR ONLY!!**  
INSTALL (2) VENTS ON THE TOP  
AND BOTTOM OF THE SHAFT END.

PLUG ALL HOLES ON THE ELECT BOX.  
USE A CORD GRIP FOR THE CONDUIT  
OPENING.

