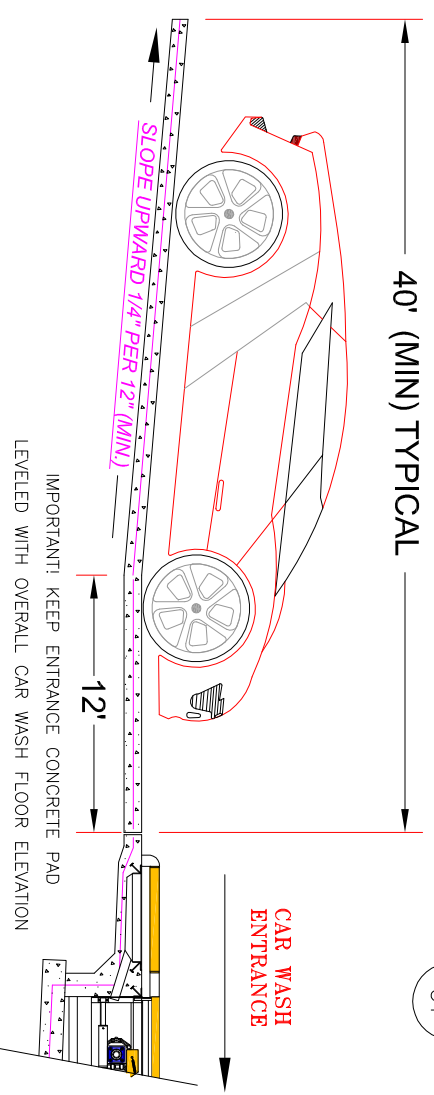
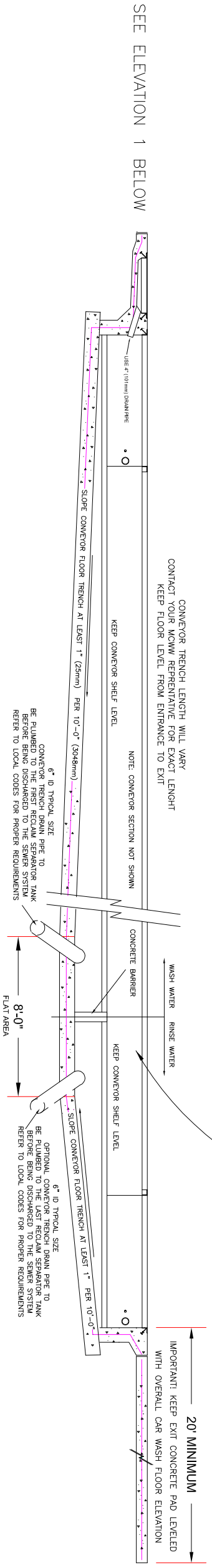


- RECOMMENDED CONVEYOR TRENCH CONSTRUCTION PROCEDURES
1. POUR TRENCH FOOTINGS PER LOCAL CODE.
 2. POUR CONVEYOR FLOOR TRENCH PER LOCAL CODE.
 3. POUR WALLS.
 4. POUR FINISHED FLOOR IN CAR WASH BAY.
 5. POUR CONVEYOR SHELF LAST.

IMPORTANT NOTE:

1 - A DIFFERENT ELEVATION FOR EACH SIDE OF THE TRENCH MAY BE REQUIRED WHEN THE TRENCH DRAINS ARE CROSSING EACH OTHERS PATH TO THE RECLAIM TANKS
 2 - SEE PAGE US FOR DETAILS



ELEVATION 1 - CONVEYOR APPROCH

1 SECTION: CONVEYOR TRENCH (GENERAL)
 C1 SCALE: NTS



VEHICLE WASHING
EQUIPMENT

48285 Frank
Wixom, MI 48393
www.motorcitywashworks.com

LVL	DATE	ENGR.	DESCRIPTION
Revisions			

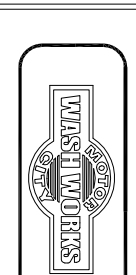
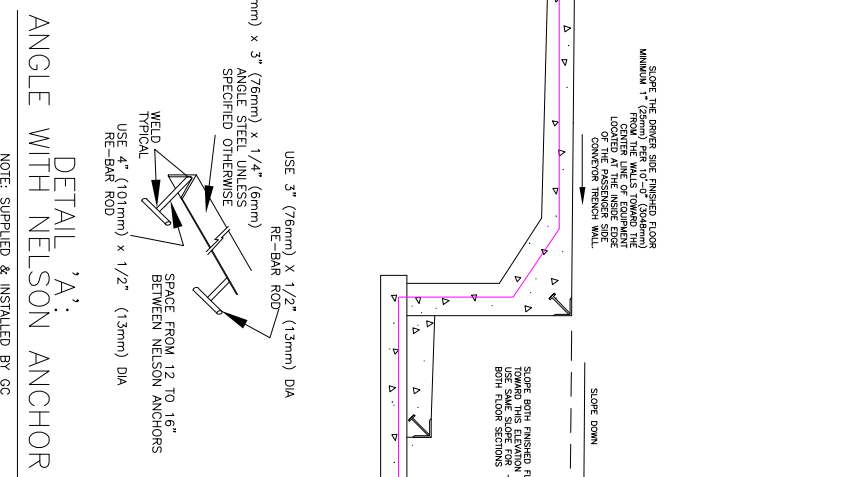
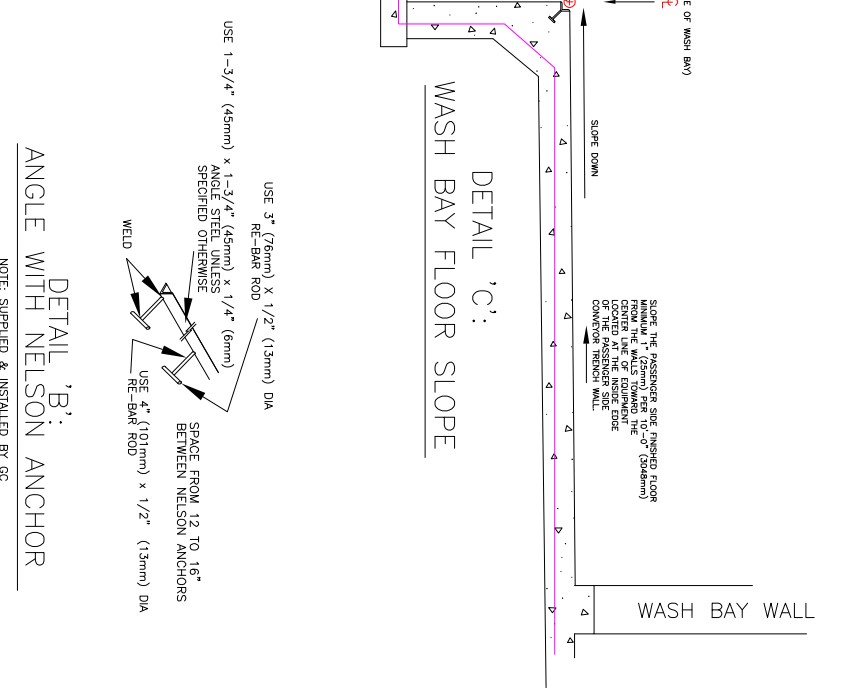
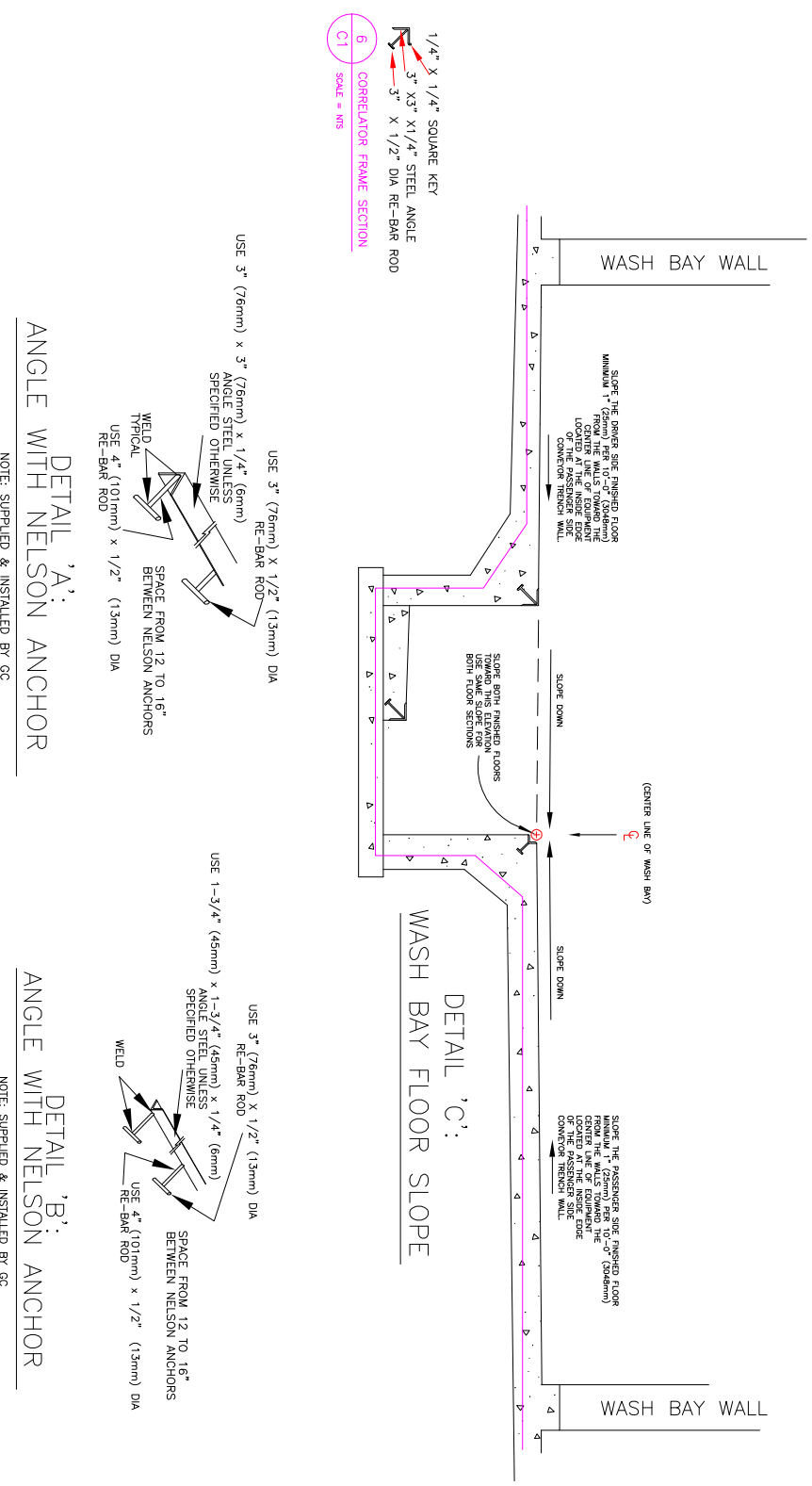
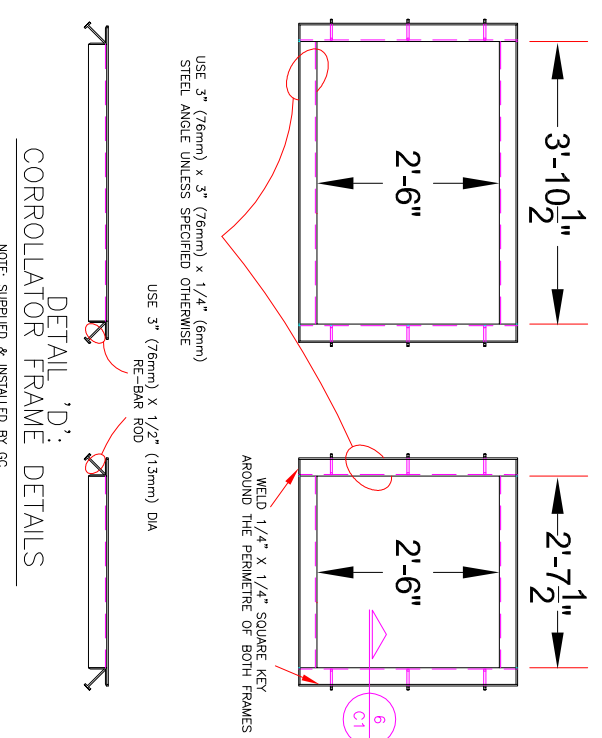
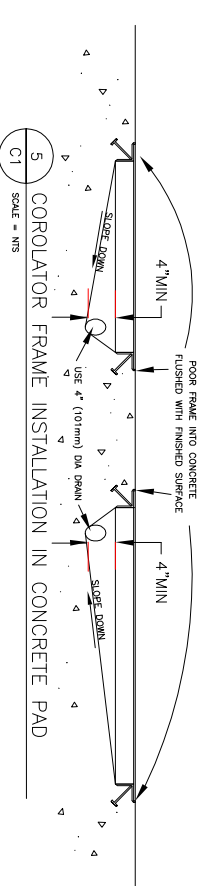
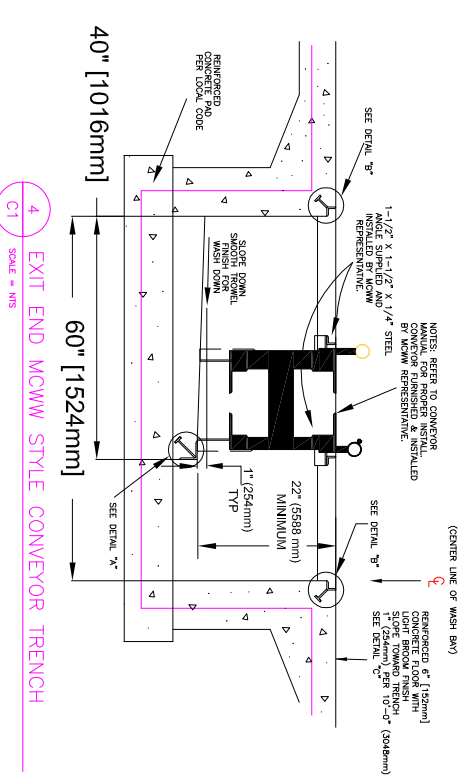
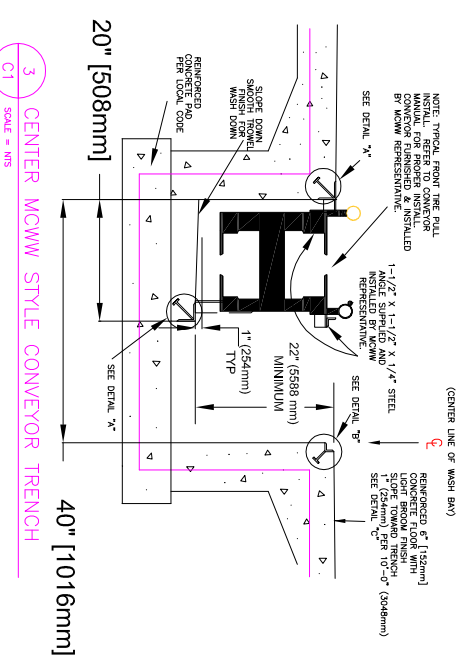
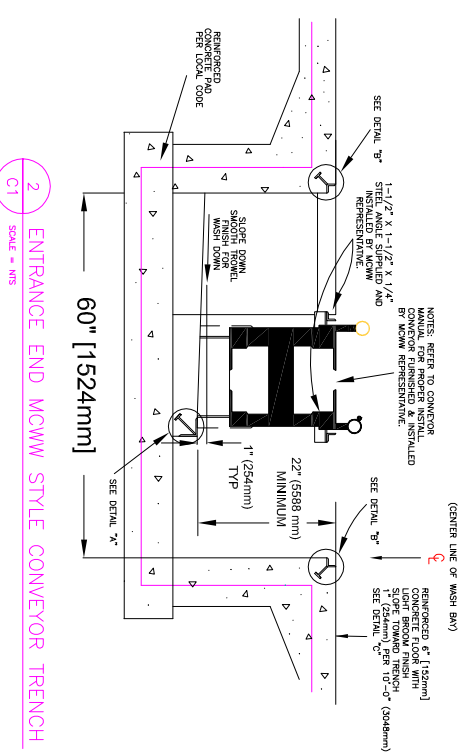
DRAWN: ML	DATE: 10-14-13
SCALE: NTS	PAPER: 17" X 11"

HARD COPY IS INTENDED TO BE **ANSI B** WHEN PRINTED SCALE(S) ARE NOT ACURATE FOR ANY OTHER SIZE

MCWW CAR WASH
CV TRENCH DETAILS 1

SHEET-
DWG:
C1

C2-CV TRENCH DETAILS 2



VEHICLE WASHING
EQUIPMENT

48285 Frank
Wixom, MI 48393
www.motorcitywashworks.com

LVL	DATE	ENGR.	DESCRIPTION

Revisions

DRAWN:	DATE:
ML	10-14-13

HARD COPY IS INTENDED TO BE ANSIB WHEN PRINTED SCALE(S) ARE NOT ACURATE FOR ANY OTHER SIZE

MCWW CAR WASH
CV TRENCH DETAILS 2

SHEET-DWG:
C2