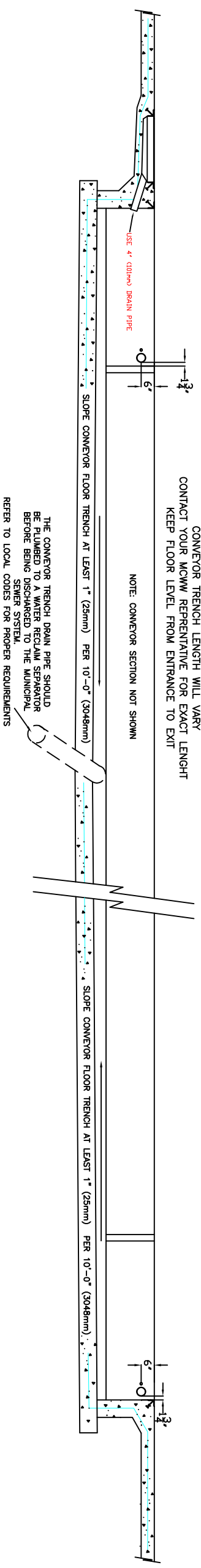


CONVEYOR TRENCH FLOOR PLAN  
SCALE: NTS

- RECOMMENDED CONVEYOR TRENCH CONSTRUCTION PROCEDURES**
1. POUR TRENCH FOOTINGS PER LOCAL CODE.
  2. POUR CONVEYOR FLOOR TRENCH PER LOCAL CODE.
  3. POUR WALLS.
  4. POUR FINISHED FLOOR IN CAR WASH BAY.
  5. POUR CONVEYOR SHELF LAST.



SECTION: CONVEYOR TRENCH  
SCALE: NTS

CONVEYOR TRENCH LENGTH WILL VARY  
CONTACT YOUR MCWW REPRESENTATIVE FOR EXACT LENGTH  
KEEP FLOOR LEVEL FROM ENTRANCE TO EXIT

NOTE: CONVEYOR SECTION NOT SHOWN

THE CONVEYOR TRENCH DRAIN PIPE SHOULD  
BE PLUMBED TO A WATER RECLAIM SEPARATOR  
BEFORE BEING DISCHARGED TO THE MUNICIPAL  
SEWER SYSTEM.  
REFER TO LOCAL CODES FOR PROPER REQUIREMENTS

CONVEYOR TRENCH LENGTH = CONVEYOR LENGTH + 1'-0" (300 mm)

NOTES: CONVEYOR LENGTH HAS TO BE IN MULTIPLES OF  
5 FEET. EXAMPLE: 65' OR 70' OR 75' AND UP



VEHICLE WASHING  
EQUIPMENT

48285 Frank  
Wixom, MI 48393  
www.motorcitywashworks.com

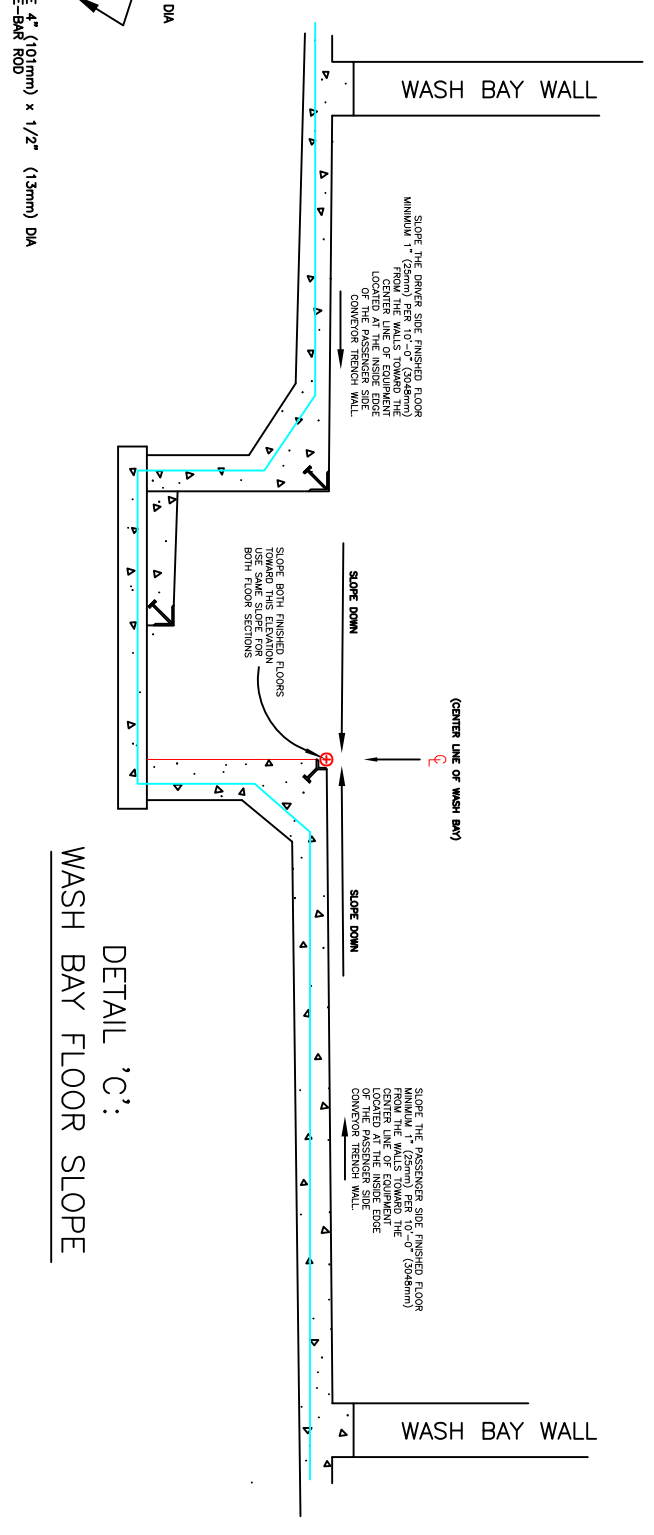
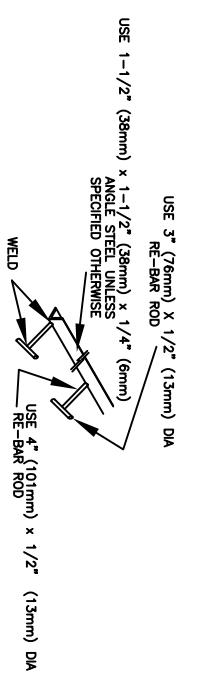
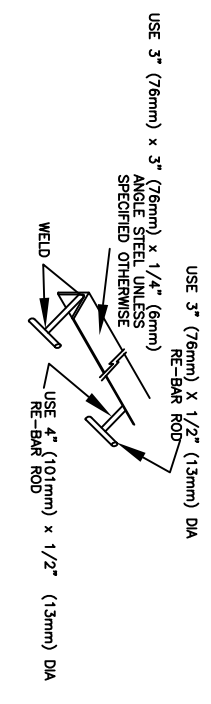
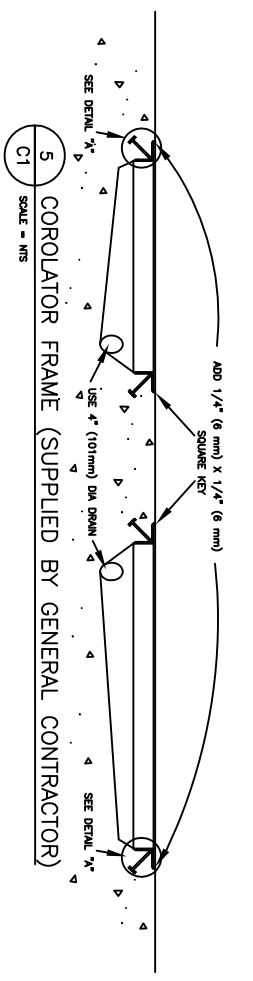
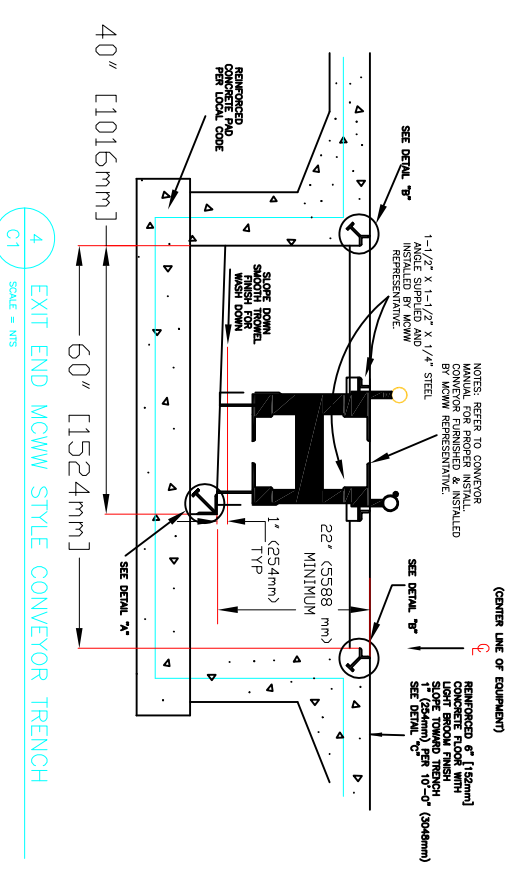
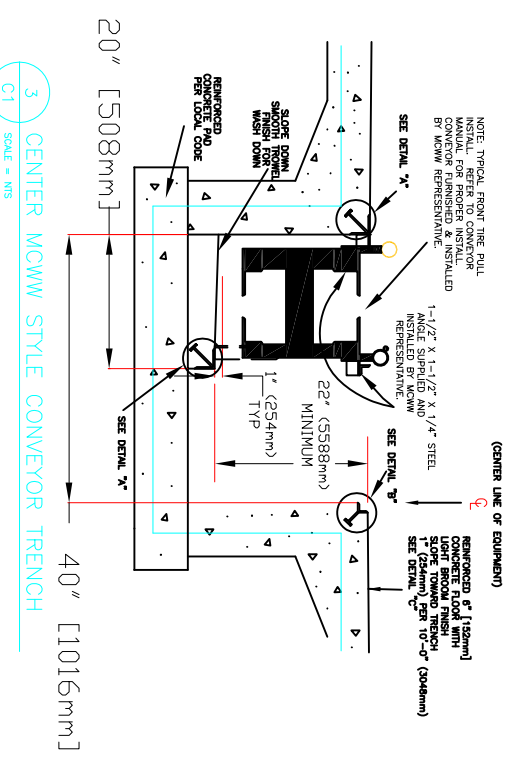
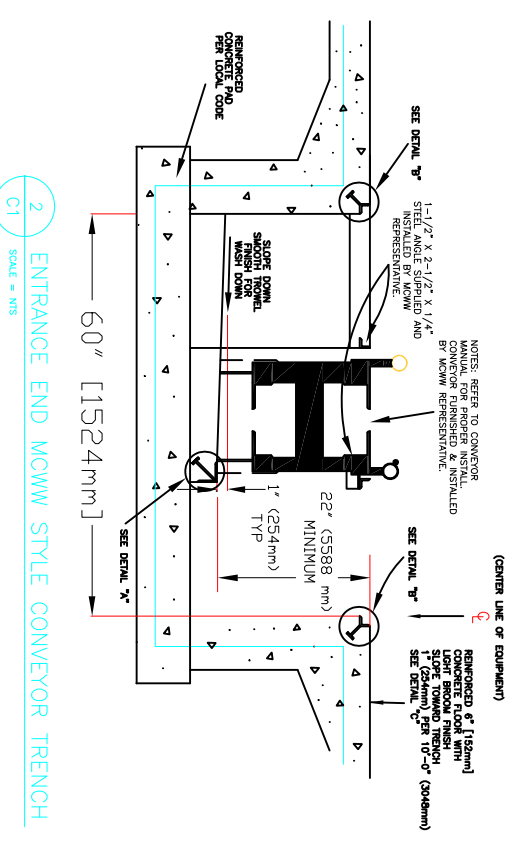
LVL	DATE	ENGR.	DESCRIPTION
<b>Revisions</b>			

DRAWN: MML	DATE: 12/03/09
SCALE: AS SHOWN	PAPER: 17" X 11"

HARD COPY IS INTENDED TO  
BE ANSI B WHEN PRINTED  
SCALE(S) ARE NOT ACURATE  
FOR ANY OTHER SIZE

MCWW CONVEYOR  
CV TRENCH DETAILS 1

SHEET-  
DWG:  
C-1



VEHICLE WASHING  
EQUIPMENT

48285 Frank  
Wixom, MI 48393  
www.motorcitywashworks.com

LVL	DATE	ENGR	DESCRIPTION
<b>Revisions</b>			

DRAWN: MML	DATE: 03/10/09
SCALE: AS SHOWN	PAPER: 17" X 11"

HARD COPY IS INTENDED TO BE ANSIB WHEN PRINTED SCALE(S) ARE NOT ACURATE FOR ANY OTHER SIZE

MCWW CONVEYOR  
CV TRENCH DETAILS 2

SHEET-  
DWG:  
C-2